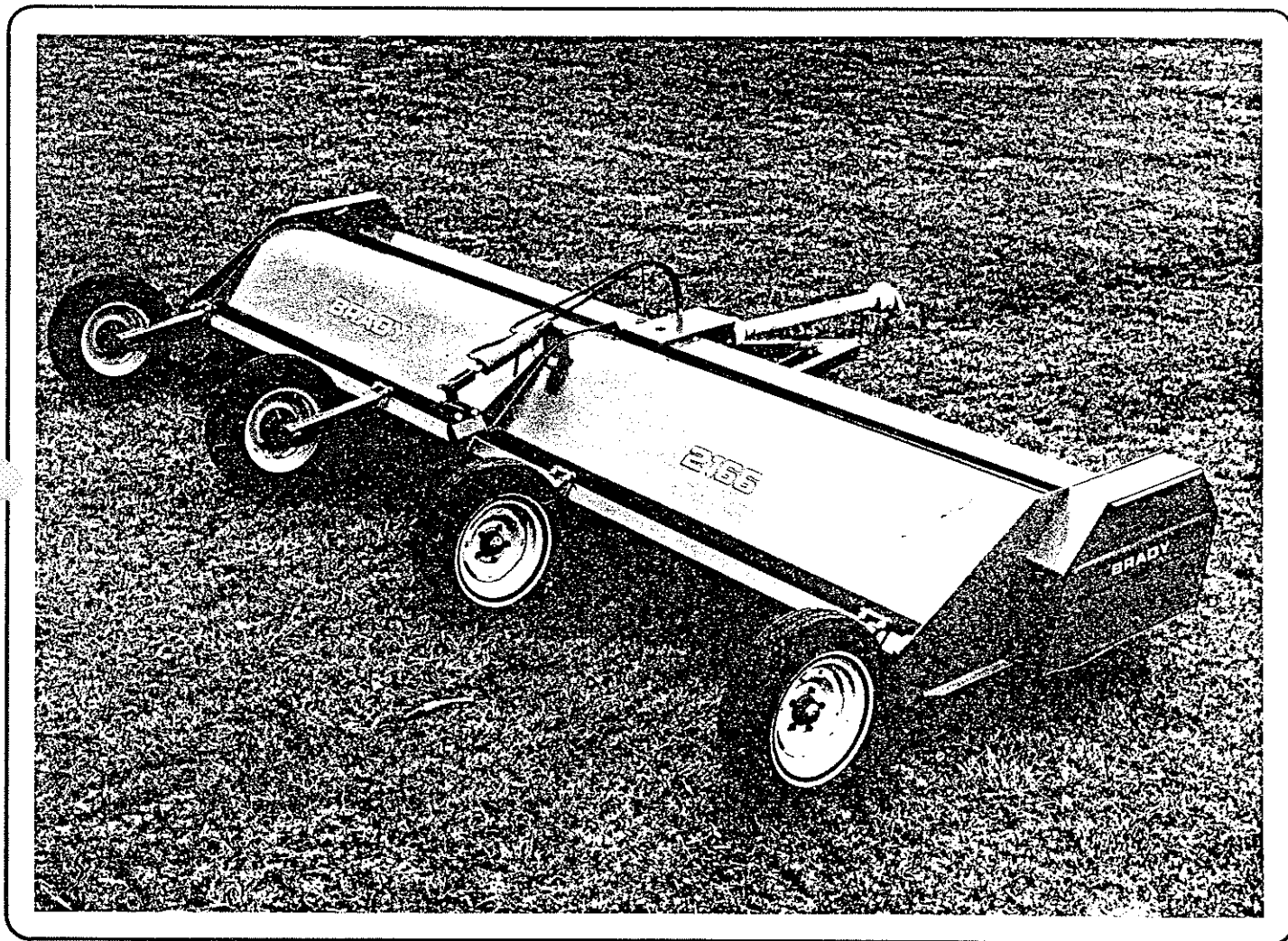


**FOX<sup>®</sup> BRADY<sup>®</sup>**

DIVISION OF HINIKER COMPANY  
P. O. BOX 3407  
MANKATO, MN 56002

## 2166 SHREDDER



**operator's manual  
and service parts**

**716-10276**

# TO THE PURCHASER

This manual provides instructions with essential information for set-up, operation and repair parts for your new 2166 Shredder. Study this manual carefully and keep it in a safe place for future reference. It will help you obtain maximum performance from your machine.

The Brady 2166 Shredders feature rear lift design, six belt-spring loaded idler drive, individual knife replacement, and remote center bearing lubrication.

Record the purchase date and serial number below, furnish this information to your dealer when inquiring about service parts.

Date of Purchase \_\_\_\_\_

Serial Number \_\_\_\_\_

The serial number is located on the right side of gear box support.

## CONTENTS

SET-UP AND OPERATING INSTRUCTION .....	3
SAFETY SUGGESTIONS .....	3
LUBRICATION .....	4
BELT TENSIONING ILLUSTRATION .....	4
GRASS DIVIDER ILLUSTRATION .....	4
END TRANSPORT INSTALLATION .....	5
PARTS IDENTIFICATION	
Main Body .....	6-7
Cylinder Assembly .....	8
Gear Box Assembly .....	9
PTO Drive System .....	10
Optional Equipment .....	11
WARRANTY .....	12

# SET-UP INSTRUCTIONS

1. Raise shredder body approximately 15".
2. Install hitch with 3/4 X 2 1/4 HHCS. Hitch should be installed with jack on left side when viewed from rear of shredder. Upper pin in lower link should be placed in lower hole of hitch bracket for 15-16" drawbar heights.
3. Install PTO by aligning cross bolt in rear yoke with groove on input shaft and retain with lockwasher and nut.
4. Position wheel legs on rockshaft for desired row spacing. Tighten lower 4 capscrews first to 150 ft-lb. Then torque upper 4 capscrews. Install transport block, from parts carton, between rockshaft arms with 3/4 x 1 3/4 capscrew and stover lock nut.

Note: When 4 wheels are used, tire pressure should be limited to 15 to 20 psi to provide good weight distribution on uneven ground.

5. Remove belt guards and adjust spring anchor on belt tightener to **S** Start position with a screwdriver. See instruction on page 4.
6. Fill gear box with type A or F automatic transmission fluid. Lubricate all bearings according to instruction on page 4.
7. Attach hose carrier from parts box to rear line shaft shield capscrew on left side of gear box cover.

# OPERATING INSTRUCTIONS

1. Operate with knives a minimum of 2" above the ground to prevent excessive wear and breakage.
2. The tractor should be operated at recommended PTO speed to attain maximum shredding effectiveness.

Proper belt tension should be maintained at all times to prevent damage due to slippage. To check belt tension, remove belt guards and draw a line of sight horizontally across bottom of belts to instruction decal on end plate. If the bottom of the belts have stretched into area ① then the spring anchor should be moved from start **S** position to **1**. If they have stretched into area ② then the spring anchor should be moved to **2**, etc.. See page 4 for illustration of drive components. Spring tension can be adjusted with a screw driver or small pry bar. To release spring tension, grip spring anchor with pliers or vise grips and pull outward and rotate downward simultaneously.

4. Do not operate shredder with broken or missing knives. The resulting vibration will cause structural and bearing damage.

5. Do not make sharp turns with shredder under load. This type of operation will cause PTO damage. The tractor drawbar should be properly positioned according to instruction decal on PTO assembly prior to hooking up to shredder.
6. Height control can be accomplished with either a ratchet jack or a hydraulic cylinder. The 3-way transport block between the rockshaft arms will support the machine when transporting without a jack or cylinder. To adjust the transport height, raise the shredder approximately 6". Loosen the 3/4 lock nut and turn block to side that gives desired height, let the machine down so that transport block lies flat on center plate then retorque 3/4 lock nut.
7. To align sheaves, turn line shaft eccentric locking collar opposite the direction of rotation. The line shaft can then be moved in or out to align sheaves. Tighten locking collar in direction of rotation and tighten set screw.

# SAFETY SUGGESTIONS

1. Keep all shields in place and functioning, especially the front flipper shields.
2. A tractor equipped with a cab should be used when cutting in areas that may be littered with glass or metal objects that could be thrown from the shredder.
3. Never permit anyone to ride on the tractor with the operator or on the shredder.
4. Never stand in front or behind machine when the rotor is turning. Disengage tractor PTO before making adjustments or lubrication.

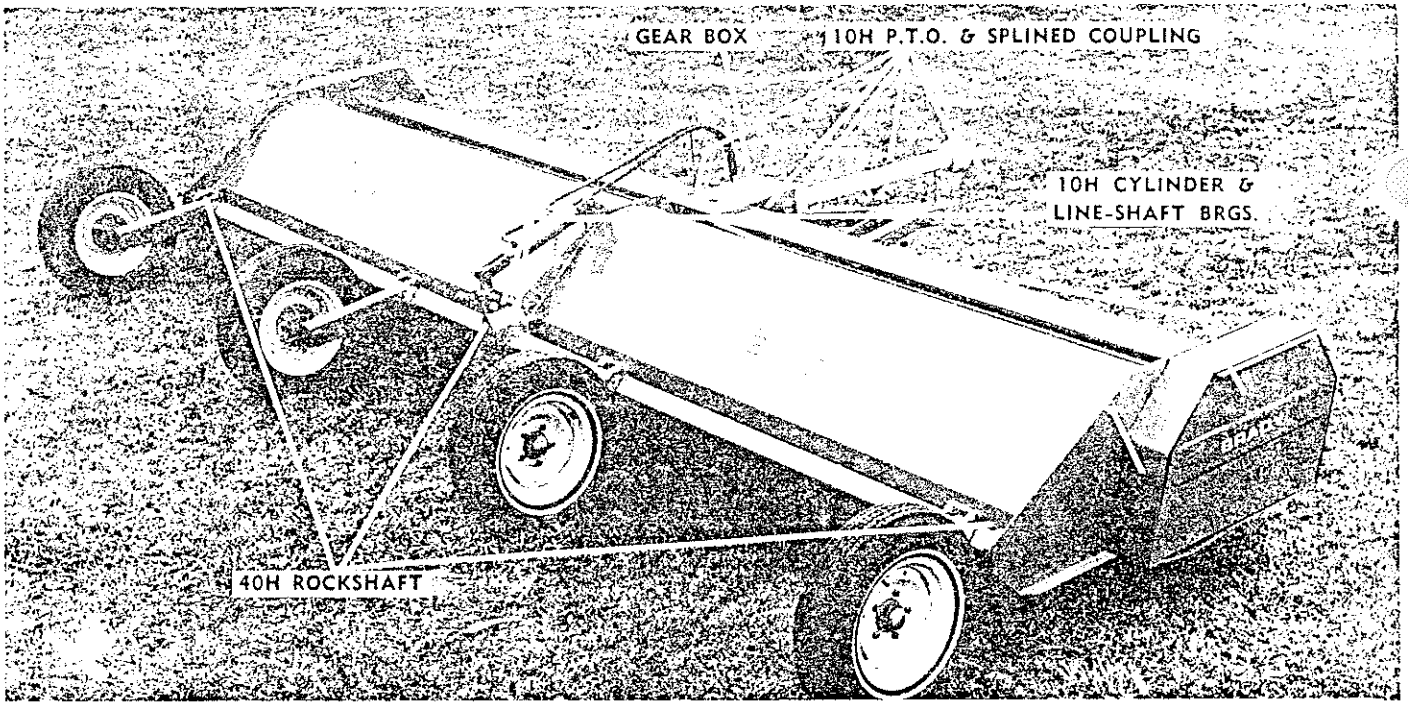
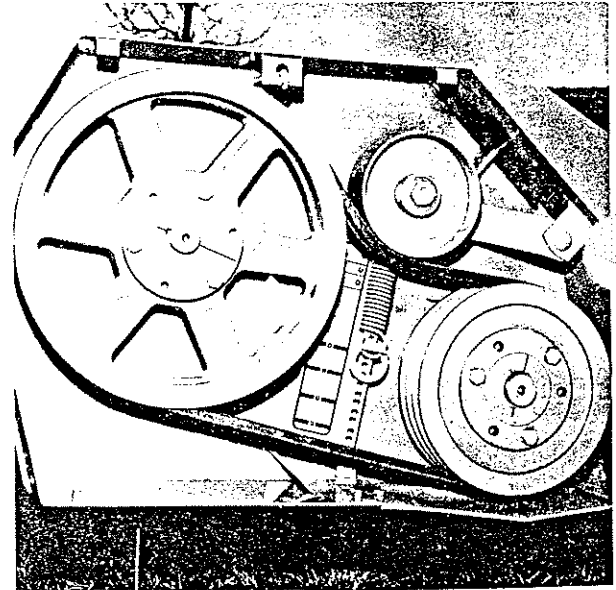


FIG. 1 BELT DRIVE



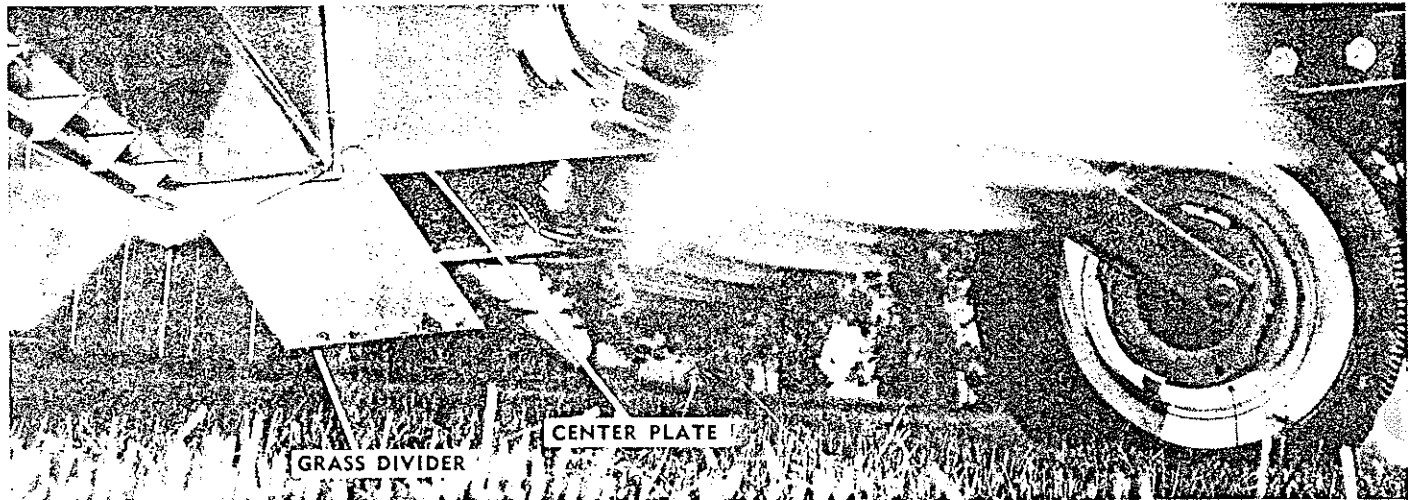
## LUBRICATON

The line shaft and cylinder bearings, PTO and splined couplings on line shafts should be greased at 10 hour intervals. One pump with hand gun is recommended for sealed bearings to prevent seal damage.

The rockshaft bearings should be greased at 40 hour intervals. The lubrication intervals recommended are based on average conditions. More frequent lubrication will not be detrimental if the 1 pump rule is followed for sealed bearings.

The oil level in the gear box should be maintained with type A or F automatic transmission fluid. The wheel bearings should be adjusted and repacked annually.

FIG. 2 GRASS DIVIDER

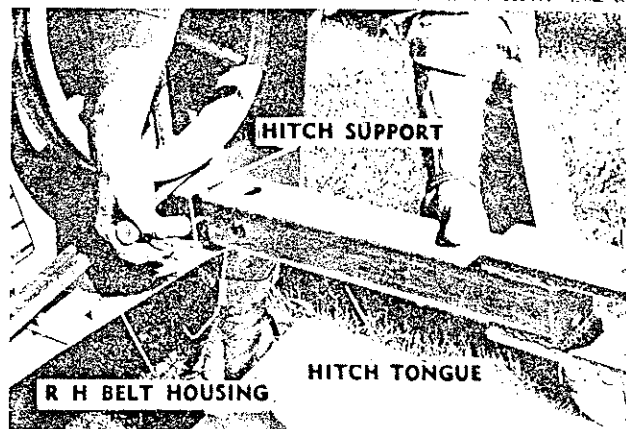
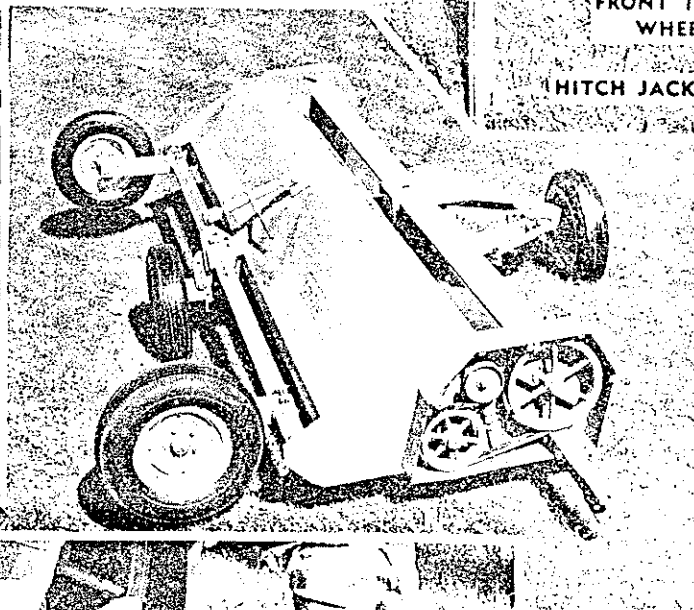
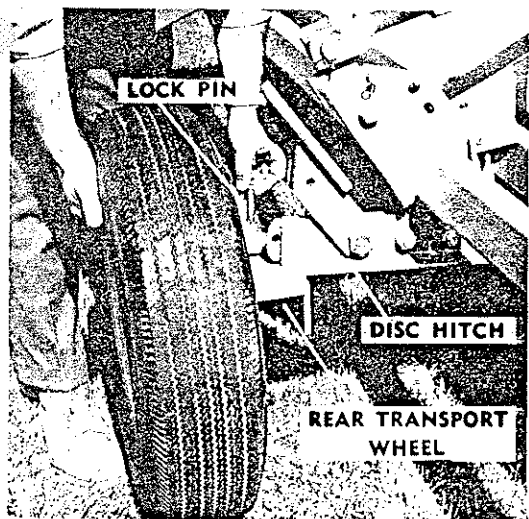


# END TRANSPORT INSTALLATION

To install the end transport attachment, it is necessary to weld a hitch support into the right belt housing according to instruction sheet. The rear transport wheel assembly mounts on the disc hitch. Attach disc hitch to lower rear corner of center plate with (2) 3/4 X 2 HHCS. The rear 3/4 X 2 1/4 HHCS also clamps the lower end of disc hitch braces. The upper ends attach to brackets under body with 5/8 X 1 1/2 HHCS.

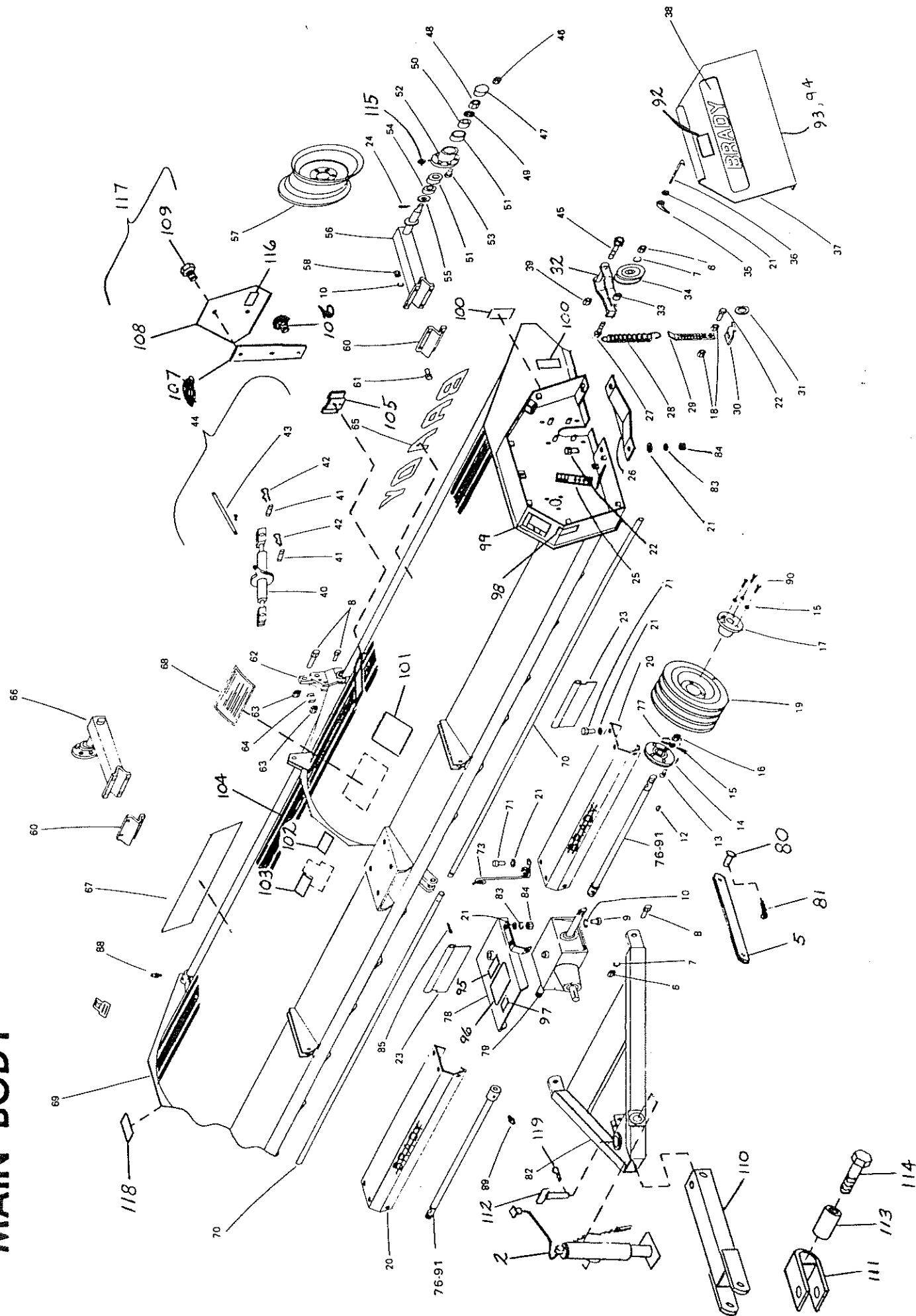
The following sequence should be followed when converting machine for end transport: 1. Raise shredder high enough to slip rear transport wheel on to disc hitch angles. 2. Remove pin from disc hitch and swing up to clear rear transport tire. Insert pin through disc hitch angle and rear transport spindle bracket to secure to shredder. 3. Fully raise rockshaft to transfer weight on to rear transport wheel. Lock rockshaft into raised position

by pushing disc hitch under stop bar between rockshaft arms and retain disc hitch with latch. 4. Support front of shredder on jack and transfer hitch tongue to support in belt housing. 5. Raise front of machine sufficiently with jack to allow front transport wheel leg to be inserted into hitch A-frame. Pin parts in position and you are ready to end transport.



ITEM NO.	PART NO.	DESCRIPTION	QUAN. REQ'D
2	000-24601	Jack	1
5	100-13220	Hitch Link	1
6	034-05108	3/4 NC Hex Nut Pl.	2
7	033-22016	3/4 Med. Lockwasher Pl.	2
8	031-02356	3/4 NC x 2-1/4 HHCS Pl.	4
9	031-05302	5/8 NC x 1-1/4 HHCS	4
10	033-22015	5/8 Med. Lockwasher Pl.	20
12	035-60055	5/16 x 2-3/4 Woodruff Key	2
13	030-11130	1/2 NC x 1 CGE. Bolt	8
14	000-23150	1-1/2 Flangette Bearing	2
	000-23151	1-1/2 Bearing Insert w/ Collar	1
	000-23152	Relube Flange Set	1
15	033-21013	1/2 Med. Lockwasher	14
16	034-00105	1/2 NC Hex Nut	8
17	000-28673	Q.D. Hub	2
18	034-00117	3/8 NC Jam Nut	4
19	000-28511	Sheave 16.0 P.D. 3 Grv.	2
20	000-65477	Line Shaft Shield	2
21	033-02008	3/8 Flat Washer Pl.	30
22	031-01105	3/8 NC x 1 HHCS Pl.	2
23	000-64011	Shield Plate	22
24	035-42034	5/32 x 1-1/2 Cotter Pin	2
25	000-29595	Belt Tension Decal	2
26	000-65455	Sheave Guard W.A.	2
27	031-06363	3/4 x 4 Inch Long Hex HD Bolt	1
	034-05173	3/4 Inch Stover Lock Nut	1
28	000-29268	Extension Spring	2
29	000-65187	Take Up Bar	2
30	000-65186	Spring Anchor	2
31	000-20179	1-3/8 Machinery Bushing	2
32	400-14283	LT Idler Arm	1
	400-14284	RT Idler Arm	1
33	400-10466	Spacer	2
34	000-28672	Belt Idler	2
35	000-65223	Threaded Handle	2
36	000-65493	Cover Rod	2
37	000-65191	Belt Guard Cover L.H. (Includes Items 38,92,93.)	1
	000-65192	Belt Guard Cover R.H. (Not Shown) (Includes Items 38,92,94)	1
38	715-05149	Brady Decal	2
39	034-05170	1/2 NC Stover Locknut	2
40	000-24556	Ratchet Jack Body (Optional)	1

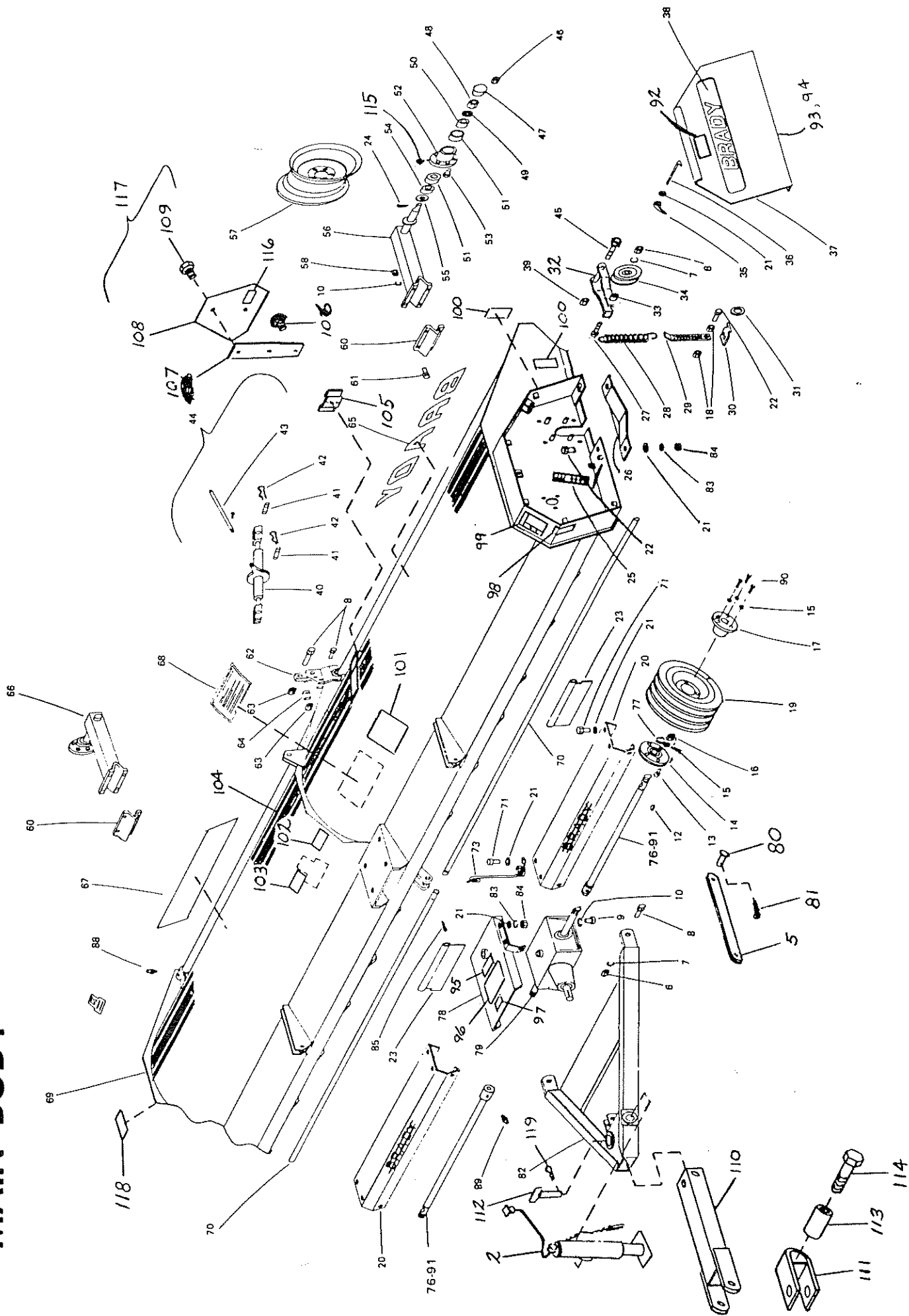
# MAIN BODY



ITEM NO.	PART NO.	DESCRIPTION	QUAN. REQ'D
41	000-04169	Connector Pin (Optional)	2
42	000-04170	Hair Pin Clip (Optional)	4
43	000-24502	Screw Jack Handle w/Rivet (Optional)	1
44	000-04067	Ratchet Jack Comp. (Optional)	1
45	031-06218	1/2 x 5-1/4 Inch HHCS	2
46	700-81067	Hub Lug Nut	20
47	103-15008	Hub Cap	4
48	700-79513	3/4 NF Hex. Slotted Nut	4
49	710-05106	3/4 Std. Flat Washer	4
50	601-02000	Outer Bearing	4
51	601-05000	Bearing Race	8
52	000-01088	Hub Assembly w/Races	4
53	000-01089	Lug Bolt 1/2-20 x 1-1/2 NF	20
54	601-02019	Inner Bearing	4
55	000-23035	Grease Seal	4
56	103-00124	Wheel Leg	4
57	805-001-155	15" Wheel - 5 Bolt	4
58	034-05107	5/8 NC Hex. Nut	16
60	000-65174	Clamping Plate	4
61	031-06304	5/8 NC x 1-3/4 HHCS Grd. 5 Pl.	16
62	000-65127	Cylinder Link	1
63	034-05173	3/4 NC Stover Locknut Grd. B. Pl.	1
64	000-65225	Transport Block	1
65	715-05148	Brady Decal	1
66	103-00122	Wheel Leg & Hub Assembly	4
67	715-05150	Model 2166 Decal	1
68	000-29596	Operation Inst. Decal	1
69	000-65491	Body Weldment	1
70	000-65474	Flipper Shield Rod	2
71	031-02106	3/8 NC x 1-1/4 HHCS Pl.	16
73	000-69096	Hose Carrier	1
76	000-65462	Line Shaft	2
78	402-11403	Gear Box Cover	1
79	517-00189	Gear Box Assembly 1000	1
80	000-20117	Clevis Pin	2
81	035-42045	3/16 x 1-3/4 Cotter Pin	2
82	100-25020	Hitch	1
83	033-22011	3/8 Med. Lockwasher	16
84	034-05103	3/8 NC Hex Nut Pl.	16
85	035-40023	1/8 x 1 Cotter Pin	2
88	203-50100	1/8 NPT Grease Fitting	3

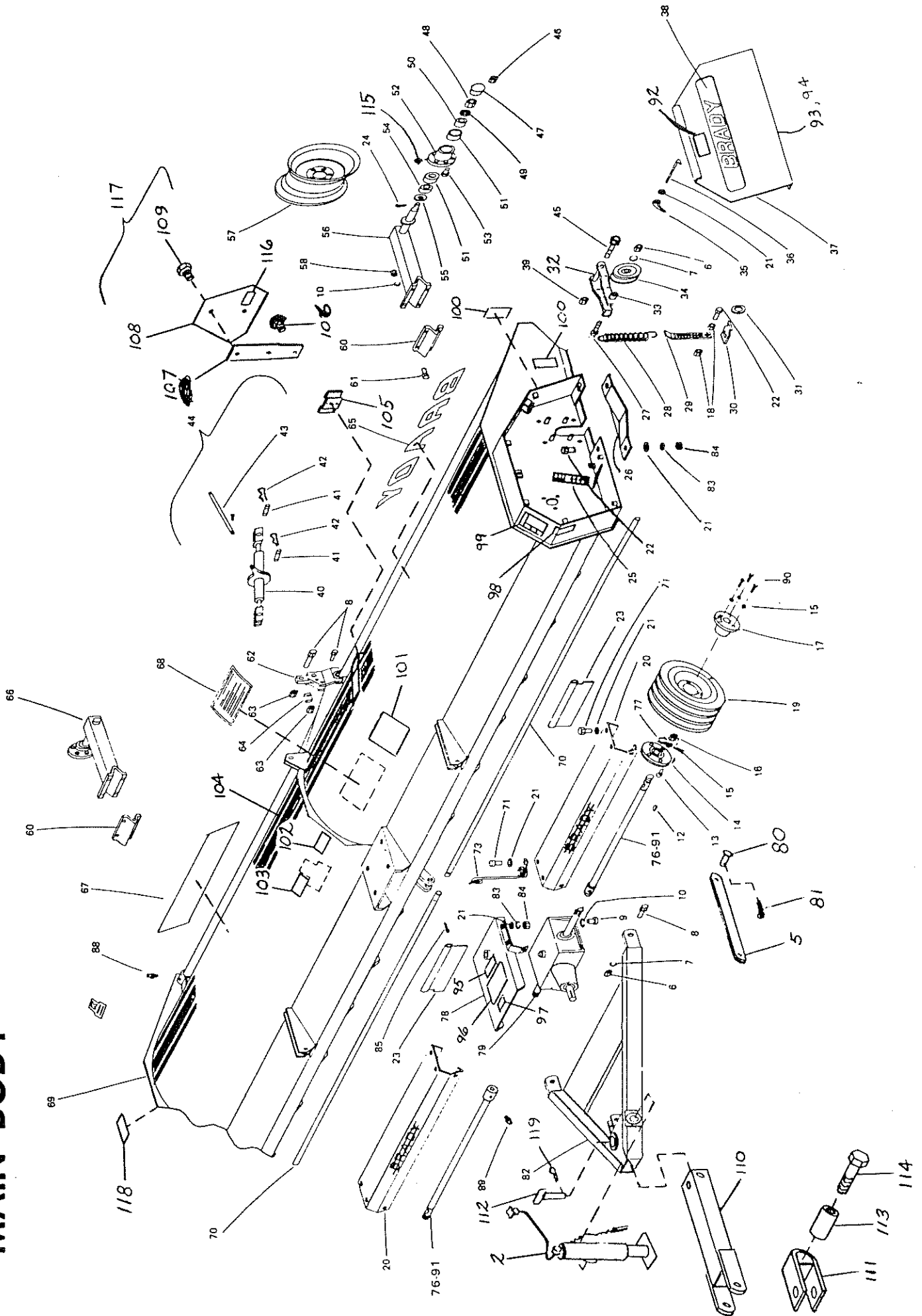


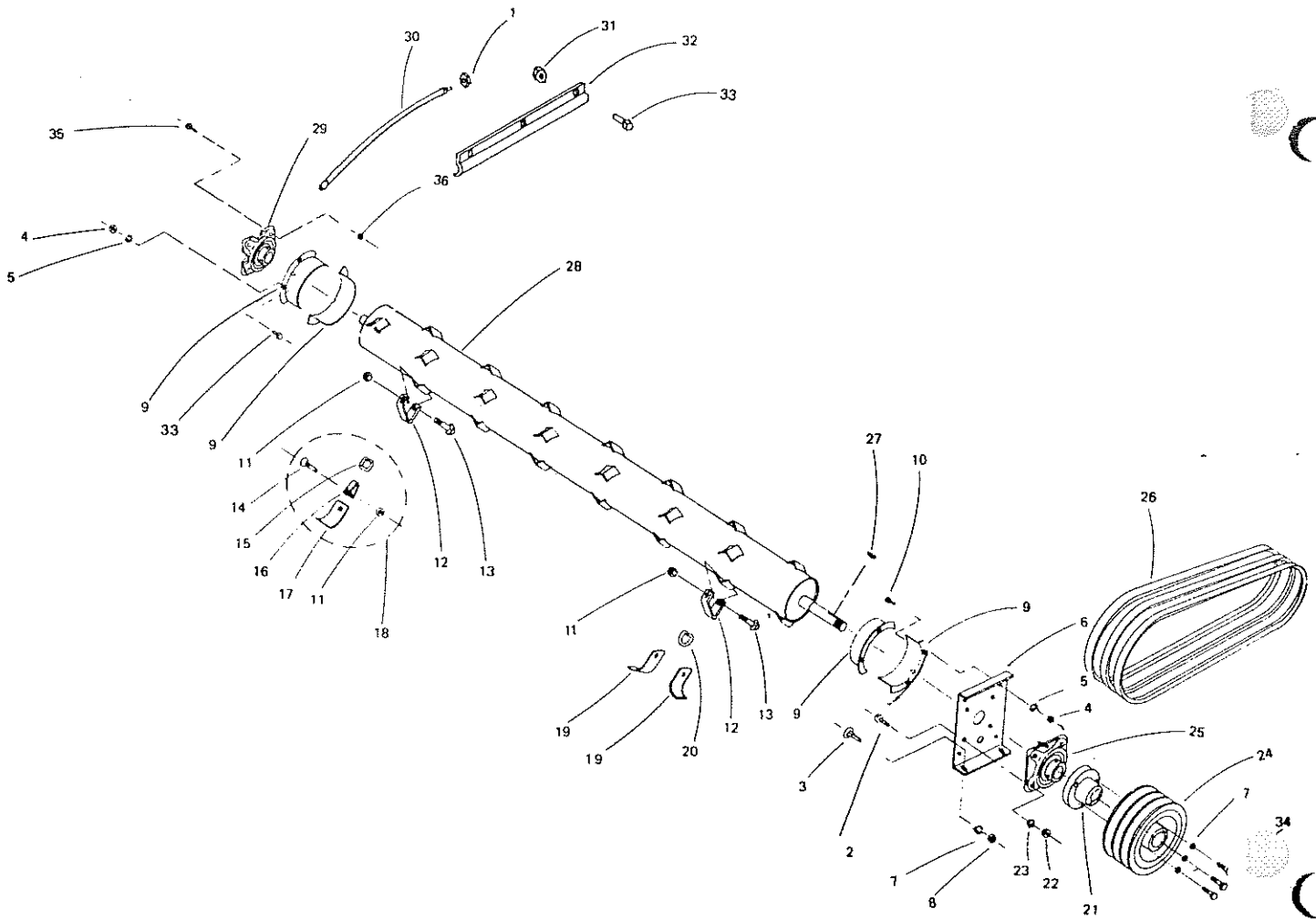
# MAIN BODY



ITEM NO.	PART NO.	DESCRIPTION	QUAN. REQ'D
89	203-50003	1/4 - 28 Grease Fitting	2
90	000-20035	1/2 NC x 2-3/4 HHCS Gr. 5 Special	6
91	791-00236	Line Shaft Repair Kit → 791-00263 -	1
92	715-04120	"Warning" Decal	2
93	792-00248	LH Belt Guard Cover	1
94	792-00247	RH Belt Guard Cover (Not Shown)	1
95	715-03149	"Certification" Decal	1
96	715-04058	Be Careful Plate	1
97	715-04006	"Warning" Decal	1
98	715-06004	Reflective Strip	2
99	715-04118	"Warning" Decal	2
100	715-06000	Reflective Strip	4
101	000-29651	"Danger" Decal	1
102	000-29607	"Knife Guarantee" Decal	1
103	715-03166	"Tire Pressure" Decal	1
104	921-001-162	Black Striping	A/R
105	400-11027	Slow Moving Vehicle Brkt.	1
106	030-16041	5/16 x 3/4 Inch Long Carriage Bolt	A/R
	033-22010	5/16 Inch Lock Washer	A/R
	034-05102	5/16 Inch Hex Nut	A/R
107	400-22083	S.M.V. Emblem Blade Mount	1
108	715-04009	"S.M.V. Emblem, Mounted" Decal	1
109	031-10599	No. 10 x 1/2 Inch Long Rd. Hd. Mach. Scr.	A/R
	033-22007	No. 10 Inch Lock Washer	A/R
	034-00216	No. 10 Inch Hex Nut	A/R
110	100-25021	Hitch Tongue Weld	1
111	100-20030	Clevis Hitch Weld	1
112	000-20227	Pin Weld	1
113	710-15274	Hitch Spacer	1
114	031-06465	1 x 5 Inch Long Hex Head Bolt; Gr. 5	1
	034-05175	1 Inch Stover Lock Nut	1
115	203-50003	1/4 Inch Straight Grease Fitting	4
116	715-03056	"Caution - S.M.V. Emblem" Decal	1
117	790-41218	S.M.V. & Mount Assembly (Includes Items 107, 108, 109, 116)	1
118	715-04119	"Warning" Decal	2
119	720-02364	No. 6 Inch Clip Pin	1

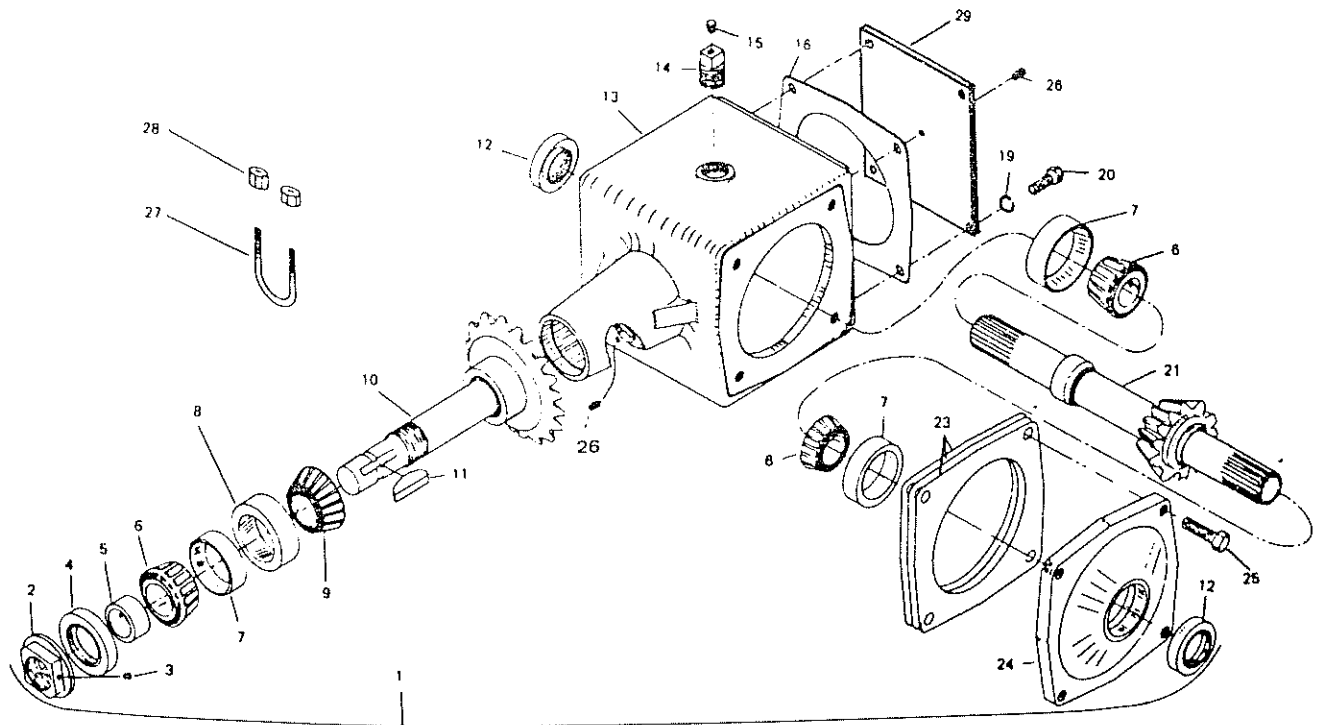
# MAIN BODY





## CYLINDER ASSEMBLY

KEY	DESCRIPTION	QUAN.	PART NO.	KEY	DESCRIPTION	QUAN.	PART NO.
1	Locknut	2	24063	21	Hub 1 5/8 Bore	2	28514
2	9/16 NC x 1 1/4 HHCS Gr. 5	8	3105254	22	9/16 NC Hex Nut	8	3400106
3	1/2 NC x 1 Carriage Bolt	4	3011130	23	9/16 L.W.	8	3321014
4	3/8 NC Hex. Nut	12	3400103	24	Sheave 10.6 P.O. 3 Grv.	2	28513
5	3/8 Med. Lockwasher	12	3321011	25	1 5/8 Flange Bearing	2	23154
6	Bearing Support	2	65153		1 5/8 Bearing Insert	1	23155
7	1/2 Med. Lockwasher	10	3321013		Grease Fitting	1	203-50003
8	1/2 NC Hex. Nut	4	3400105	26	C80 Belt (Set of three)	2	25011
9	Anti Wrap Shield	8	65145	27	3/8 x 2 3/4 TX Woodruff Key	2	3560056
10	3/8 NC x 1 HHCS	8	3101105	28	Cylinder	1	65490
11	1/2 NC Stover Locknut	72	3405170		Knife Brkt.	32	65134
12	Knife Pivot	72	65141	29	1 5/8 Flange Bearing (Special)	2	600-05045
13	1/2 NC x 3 Cge. Bolt Grd. 5	72	3015138		1 5/8 Bearing Insert	1	23155
14	1/2 NC x 1 1/4 Cge. Bolt Grd. 5	72	3015131		Adapter Fitting	1	20192
15	Square Ring	72	65144	30	Grease Hose	2	24090
16	Knife Hanger	72	65227	31	3/8 NC Stover Locknut	3	3400154
17	2 1/2" Cup Knife	72	1694	32	Hose Cover	2	65217
18	2 1/2" Cup Knife Assembly	72	65229	33	3/8 NC x 1 1/4 HHCS	7	3101106
19	Side Knife	144	65143	34	1/2 NC x 2 1/4 HHCS Gr. 5 Sp.	6	2003
20	D-Ring	72	65142	35	9/16 NC x 1 1/2 HHCS Gr. 5	8	3105254
				36	9/16 NC Stover Locknut	8	3405171

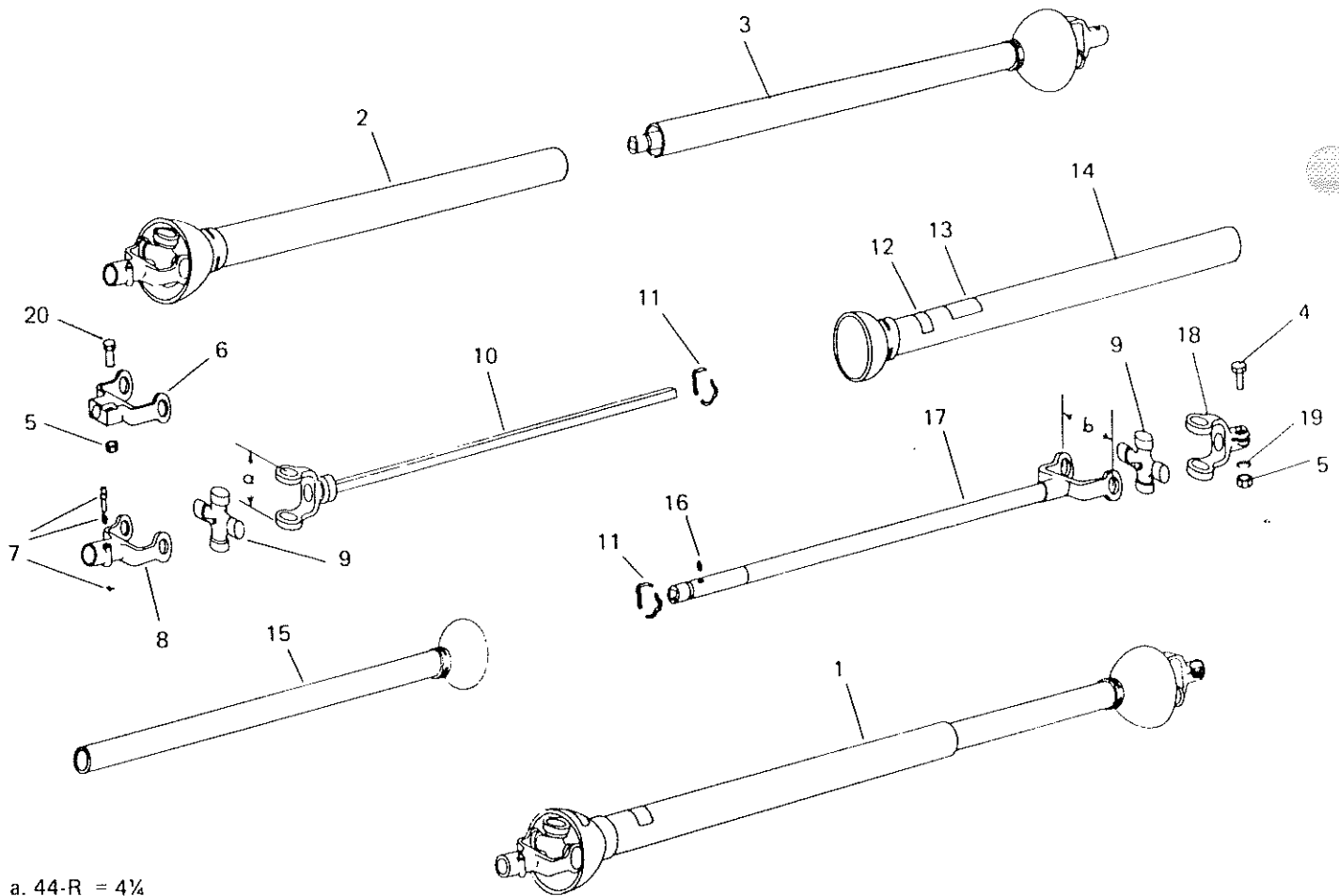


NOTE: WHEN ASSEMBLING GEARBOX, SHIM OUTPUT SHAFT AND ADJUST NUT ON INPUT SHAFT FOR .000 TO .005 END-PLAY.

# GEAR BOX ASSEMBLY 1000 R. P. M.

KEY	DESCRIPTION	QUAN.	PART NO.	KEY	DESCRIPTION	QUAN.	PART NO.
1	Gear Box Asy. 1000	1	28079	14	1" Pipe Plug	1	24001
2	1 5/8 Cast Nut	1	28007	15	3 P.S.I. Relief Valve	1	20013
3	1/4 NC x 1/4 CP Soc. HD. S.S.	2	3123014	16	Cover Plate Gasket	1	28010
4	Seal (Nat. No. 410571)	1	23005	19	1/2 Lockwasher	4	3321013
5	Spacer	1	28021	20	1/2 NC x 1 HHCS	4	3101203
6	Bearing 1 5/8 Bore	3	23002	21	Output Shaft 1000 R.P.M.	1	28064
7	Bearing Race	3	23003	23	Shim Gasket	10	28011
8	Bearing Race	1	23015	24	Side Housing w/Race	1	28004
9	Bearing 1 5/8 Bore	1	23014	25	5/8 NC x 1 1/4 HHCS Grd. 5	4	3105302
10	Input Shaft & Gear 1000 R.P.M.	1	28022	26	1/8 Pipe Plug (Brass)	2	24007
11	*3/8 x 2 3/4 No. T Wdrf. Key 3/8 x 2 1/8 No. 29 Wdrf. Key	1	3560056	27	U-Bolt	1	20193
12	Seal (C/R No. 16325)	2	23004	28	5/16 NC Stover Locknut	2	3400151
13	Gear Box with Cups	1	28001	29	Cover Plate	1	28009

\*Used on Machine Serial No. 201 and Above

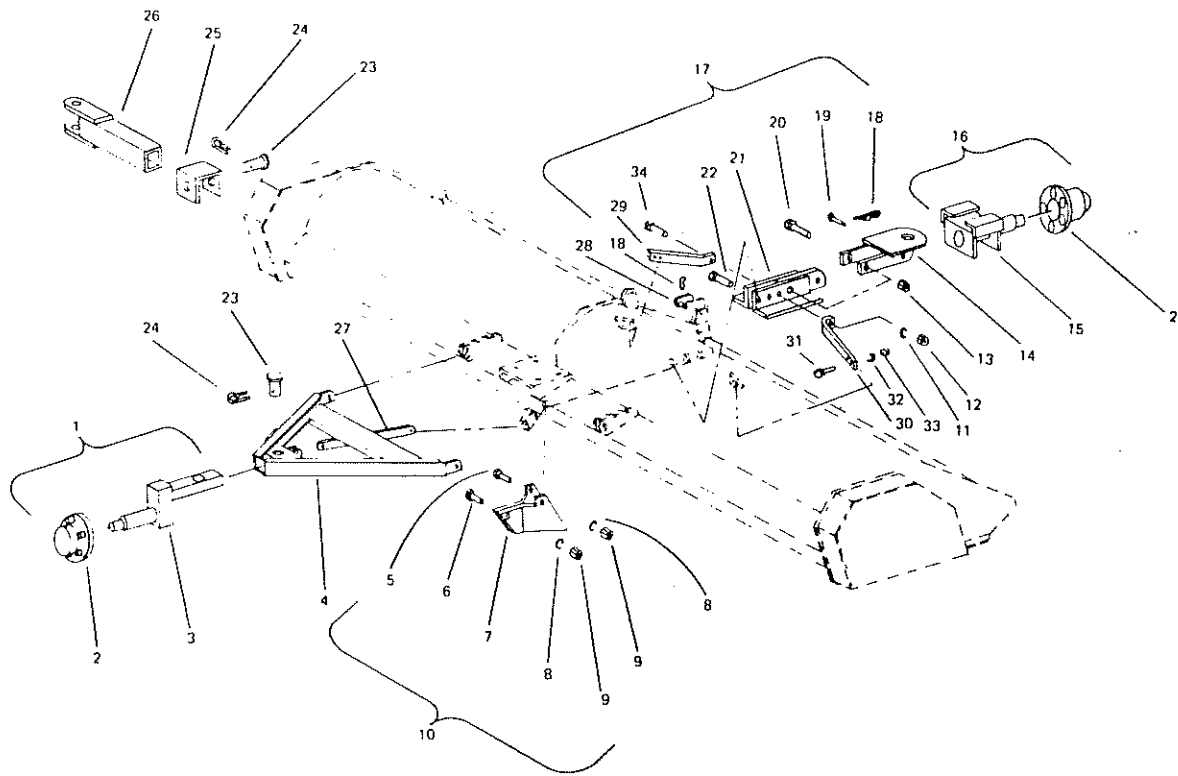


a. 44-R = 4 1/4

b. 44-R=4 1/4

## P. T. O. DRIVE SYSTEM

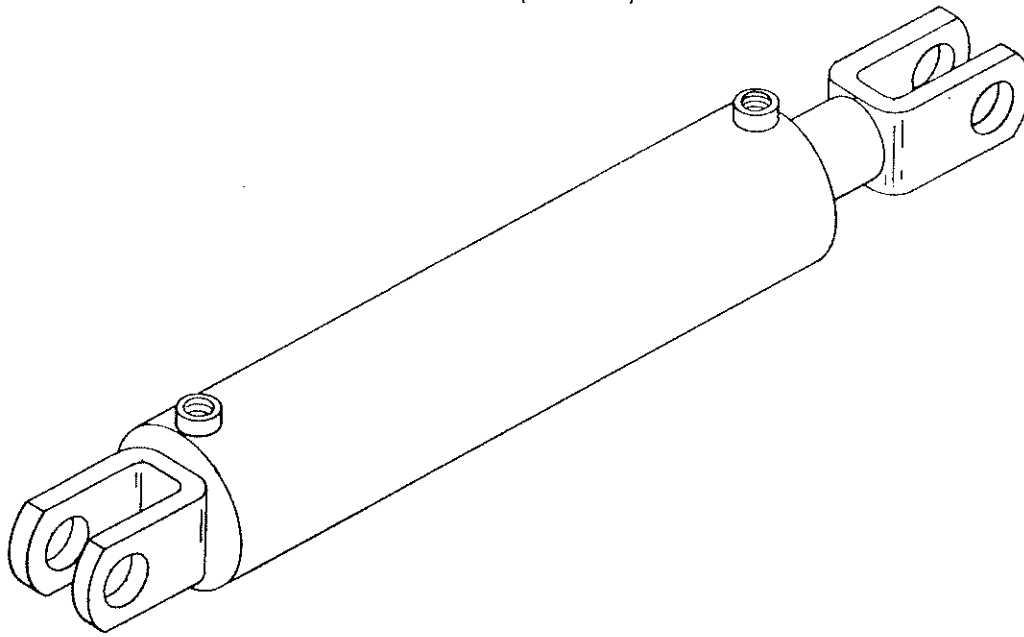
KEY	DESCRIPTION	44-R	
		QUAN.	1000 R.P.M.
1	P.T.O. Complete	1	27040
2	Front Half Assembly	1	27059
3	Rear Half Assembly	1	27060
4	1/2 NC x 3 HHCS Grd. 5 Pl.	1	3106211
5	1/2 NC Hex. Nut Pl.	2	3405105
6	1 3/8 - 21 Tooth Inv. Spline	1	27049
7	Lock Pin Kit	----	-----
8	1 3/8 6-B Spline Q.D. Yoke Asy.	----	-----
9	Center Parts Kit	2	27057
10	Yoke and Square Shaft	1	27053
11	Shield Lock Brg. Half	2	27078
12	Warning Decal	1	29536
13	Warning Decal	1	29501
14	Outer Shield And Bell Asy.	1	27084
15	Inner Shield and Bell Asy.	1	27083
16	Lube Fitting	1	12357
17	Yoke, Tube and Sleeve	1	27052
18	1 1/2 Bore Clamp Yoke	1	27063
19	1/2 Med. Lockwasher Pl.	1	3322013
20	1/2 NC x 3/4 HHCS Grd. 5 Pl.	1	3106212



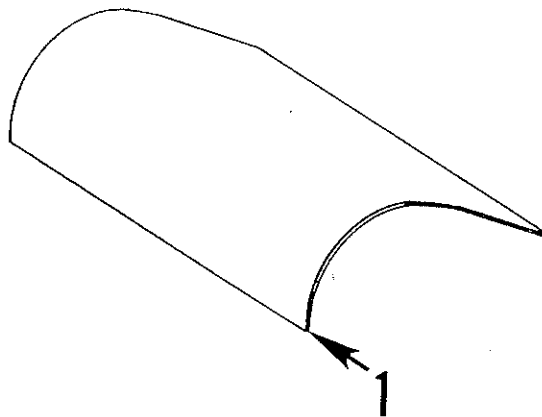
## OPTIONAL EQUIPMENT

KEY	DESCRIPTION	QUAN.	PART NO.	KEY	DESCRIPTION	QUAN.	PART NO.
1	Wheel Leg & Hub Assembly	1	65245	18	Hairpin Cotter No. 3	2	9049
2	Hub and Parts See Page 7	---	-----	19	Clevis Pin	1	20195
3	Transport Wheel Leg	1	65246	20	1" NC x 3 HHCS Pl.	1	031-06459
4	End Transport Hitch	1	65231	21	Transport Angle Bracket	1	65253
5	1/2 NC x 2 1/2 HHCS Pl.	1	3102208	22	3/4 NC x 2 HHCS Pl.	2	3102355
6	1/2 NC x 2 HHCS Pl.	1	3102207	23	Machine Pin	2	20227
7	Divider	1	65261	24	Hair Pin Cotter No. 6	2	20118
8	1/2 Lockwasher Pl.	2	3322013	25	Hitch Support	1	65219
9	1/2 NC Hex. Nut Pl.	2	3405105	26	Hitch Tongue	1	65238
10	Divider Kit	1	4386	27	Hitch Link	1	65237
11	1/2 Med. Lockwasher Pl.	3	3322016	28	Latch W.A.	1	65299
12	1/2 NC Hex. Nut Pl.	3	3405108	29	Disc Hitch Brace R.H.	1	65300
13	1" Stover Locknut Pl.	1	3405175	30	Disc Hitch Brace L.H.	1	65301
14	Disc Hitch W. A.	1	65257	31	5/8 NC x 1 1/2 HHCS GR 5	4	3106303
15	Rear Transport Spindle Asy.	1	65250	32	5/8 Lockwasher Pl.	4	3322015
16	Rear Transport & Hub Asy.	1	65249	33	5/8 NC Hex. Nut	4	3405107
17	Disc Hitch Asy.	1	4387	34	3/4 NC x 2 1/2 HHCS	1	3102356

**3 X 8 HYDRAULIC CYLINDER**  
**P/N: 200-27031**  
(OPTIONAL)



DWG. NO. 1739



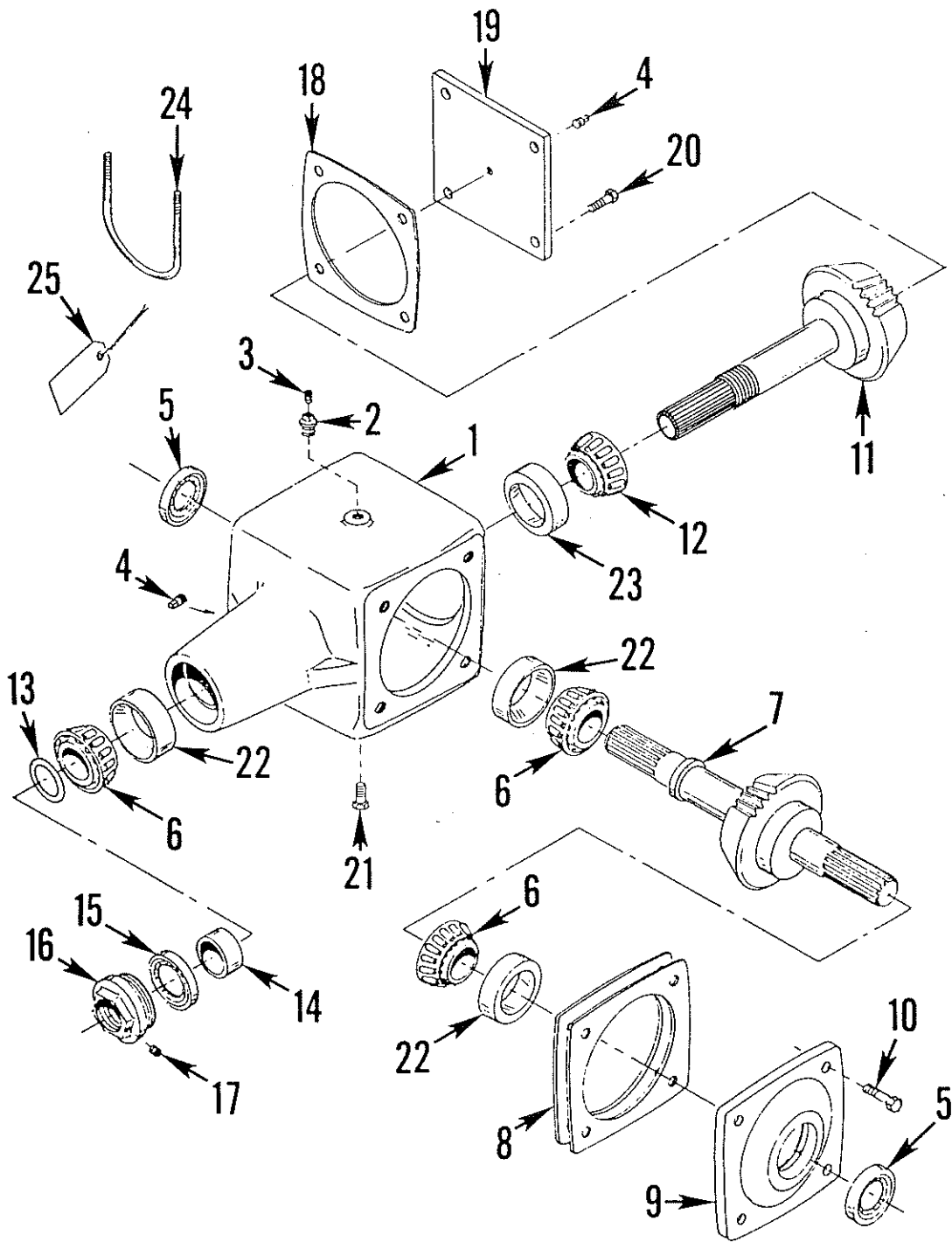
DWG. NO. 1740

ITEM NO.	PART NO.	DESCRIPTION	QUAN. REQ'D
1	792-00288	20 Inch Hood Liner (Model 1440)	A/R
	792-00289	40 Inch Hood Liner (Model 1680)	A/R





# GEAR BOX ASSEMBLY 517-00189 - 1000 RPM

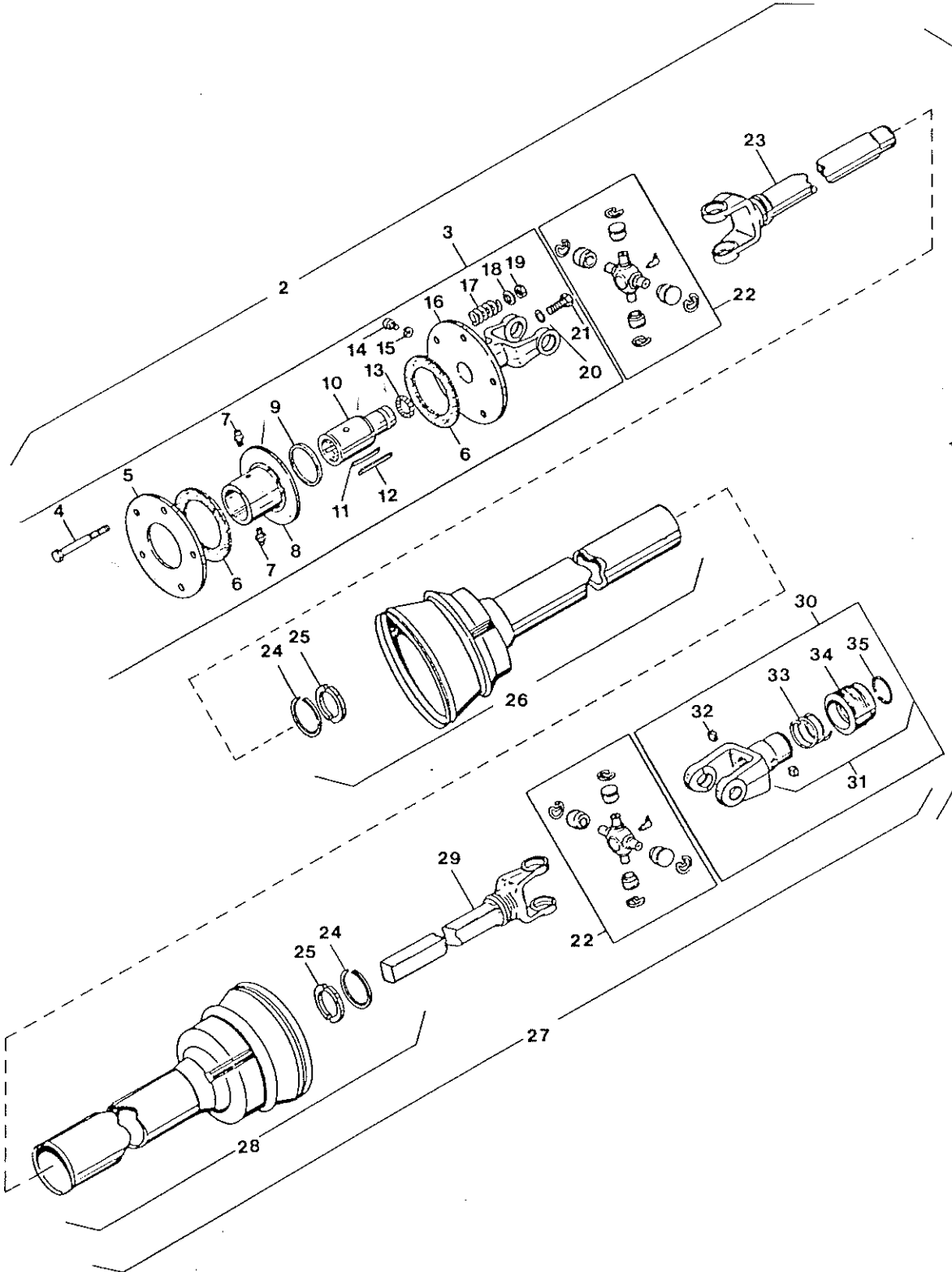


DWG. NO. 1742

## GEAR BOX ASSEMBLY 517-00189 - 1000 RPM

ITEM NO.	PART NO.	DESCRIPTION	QUAN. REQ'D
1	000-28001	Gear Box With Cups (Includes Items 22 & 23)	1
2	000-24001	Pipe Plug	1
3	203-50405	Relief Valve	1
4	203-51152	Pipe Plug	2
5	000-23004	Grease Seal	2
6	601-02036	1-5/8 Inch Bore Tapered Roller Bearing	3
7	000-28064	1000 RPM Bevel Gear Output Shaft	1
8	000-28011	Shim Gasket	A/R
9	000-28004	Side Housing Assembly	1
10	031-06302	5/8 x 1-1/4 Inch Long Hex Head Bolt; Grade No. 5	4
11	501-09092	Input Shaft With Welded Gear	1
12	000-23014	Timken No. 3877 Cone	1
13	651-06012	O - Ring	1
14	000-28021	Spacer	1
15	000-23005	Grease Seal	1
16	000-28007	1-5/8 Inch Cast Nut	1
17	031-23014	1/4 x 1/4 Inch Long Socket Head Set Screw	2
18	000-28010	Gasket	1
19	000-28009	Cover Plate	1
20	031-06203	1/2 x 1 Inch Long Hex Head Bolt; Grade No. 5	4
	033-22013	1/2 Inch Lock Washer	4
21	031-06302	5/8 x 1-1/4 Inch Long Hex Head Bolt; Grade No. 5	4
	033-22015	5/8 Inch Lock Washer	4
22	601-05028	3.125 Inch O.D. Roller Cup Bearing	3
23	601-05047	Tapered Bearing Cup	1
24	000-20193	U - Bolt	1
	034-05167	5/16 Inch Stover Lock Nut	2
25	000-29523	Notice Tag	1

# UNIVERSAL JOINT ASSEMBLY 520-02125



## UNIVERSAL JOINT ASSEMBLY 520-02125

ITEM NO.	PART NO.	DESCRIPTION	QUAN. REQ'D
1	520-02125	55 NW Universal Joint Assembly	1
2	520-02136	Joint & Tube Half With Clutch Assembly	1
3	520-02138	9000 Friction Clutch Assembly	1
4	031-06117	3/8 x 4 Inch Long Hex Head Bolt; Grade No. 5	6
5	520-03099	Pressure Plate	1
6	520-03100	Friction Disc	2
7	520-03101	Lube	2
8	520-03098	Pressure Plate With Drive Hub ✓	1
9	520-03102	Seal	1
10	520-03103	Inner Drive Member ✓	1
11	725-05046	Leaf Spring	2
12	520-01098	Drive Key	2
13	520-03104	Balls ✓	14
14	520-03106	Socket Head Cap Screw	1
15	033-22011	3/8 Inch Lock Washer	1
16	520-03097	Yoke With Clutch Plate	1
17	520-03105	Spring	6
18	520-03107	Washer	6
19	034-05168	3/8 Inch Stover Lock Nut	6
20	033-22013	1/2 Inch Lock Washer	1
21	031-08211	1/2 x 3 Inch Long Hex Head Bolt; Grade No. 5	1
22	520-02000	Cross	2
23	520-03096	Yoke and Tube	1
24	520-03020	Retaining Ring	2
25	603-04001	Nylon Bearing With Out Tab	2
	603-04023	Nylon Bearing With Tab (1987 and Later)	2
26	520-02139	Inner Guard With Bearing & Retainer	1
27	520-02141	Joint & Shaft Half With Guard	1
28	520-02140	Outer Guard With Bearing & Retainer	1
29	520-03095	Yoke & Shaft	1
30	520-02004	Yoke ✗ →	1
31	520-02005	Yoke Replacement Kit Assembly	1
32	520-03001	Panel	2
33	520-03008	Spring	1
34	520-03002	Collar	1
35	520-03010	Retaining Ring	1

✗  
13/4 YOKE  
520-02009

## HINIKER WARRANTY

The only warranty the company gives and the only warranty the dealer is authorized to give is as follows:

We warranty products sold by us to be in accordance with our published specifications or those specifications agreed to by us in writing at time of sale. Our obligation and liability under this warranty is expressly limited to repairing or replacing, at our option, within one year after date of retail delivery, any product not meeting the specification. **WE MAKE NO OTHER WARRANTY, EXPRESS OR IMPLIED AND MAKE NO WARRANTY OF MERCHANTABILITY OR OF FITNESS FOR ANY PARTICULAR PURPOSE.** Our obligation under this warranty shall not include any transportation charges or costs or installation or any liability for direct, indirect or consequential damage or delay. If requested by us, products or parts for which a warranty claim is made are to be returned freight prepaid to our factory. Any improper use, operation beyond rated capacity, substitution of parts not approved by us, or any alteration or repair by others in such manner as in our judgement affects the product materially and adversely shall void this warranty. **NO EMPLOYEE OR REPRESENTATIVE IS AUTHORIZED TO CHANGE THIS WARRANTY IN ANY WAY OR GRANT ANY OTHER WARRANTY.**

**HINIKER** reserves the right to make improvement changes on any of our products without notice.

Warranty does not apply to any machine or part which has been repaired or altered in any way so as in the company's judgement to affect its reliability, or which has been subject to misuse, negligence or accident.

When Warranty is **LIMITED** or **NOT APPLICABLE**: Warranty on hoses, cylinders, engines, hubs, spindles, bolts or other trade accessories are limited to the warranties made by the respective manufacturer only and not by **HINIKER COMPANY**.

**A DELIVERY REPORT FORM** must be filled out and received by **HINIKER COMPANY** to initiate the warranty coverage.

**HINIKER COMPANY  
P.O. BOX 3407  
MANKATO, MN 56002**